



TO: ALL TRIUMPH DEALERS - WESTERN ZONE

ATTN: SERVICE DEPARTMENT

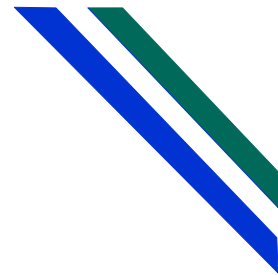
BULLETIN T-64-41

SUBJECT: TRIUMPH TR-4 WINDOW
WINDER REGULATOR

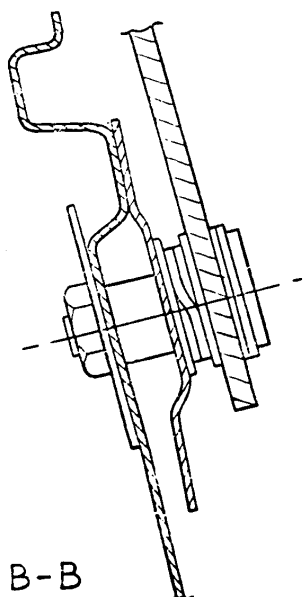
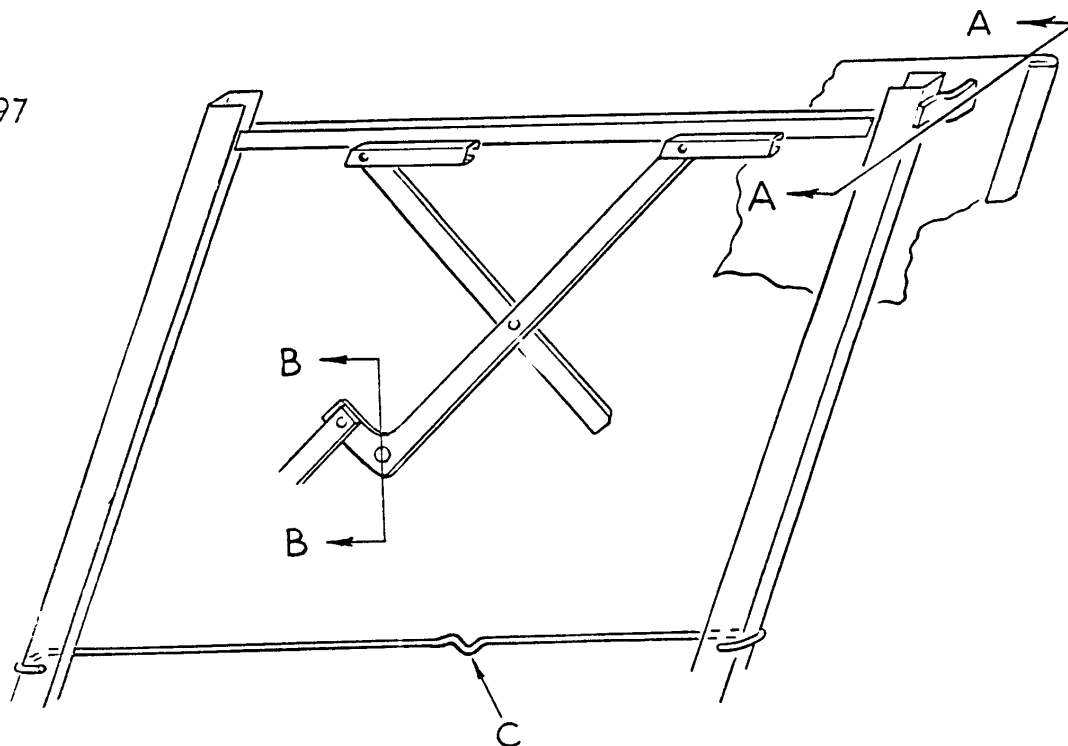
DATE: DECEMBER 10, 1964

When reports of stiffness in the operation of the door glass are received, the following procedure should be adopted which will prevent straining and damage to the regulator. The same instructions should also be followed when renewing a regulator.

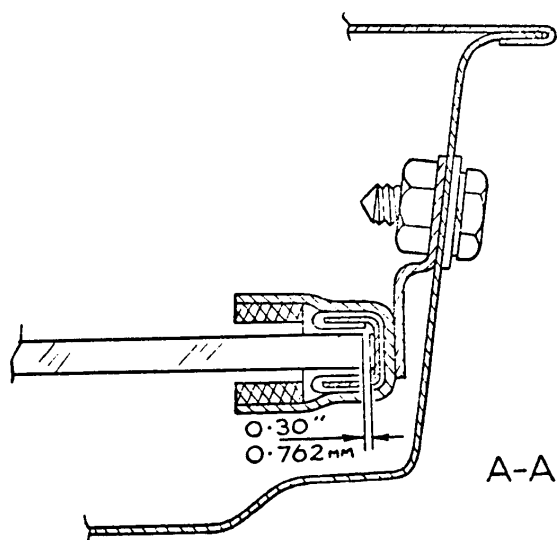
1. Remove trim panel.
2. Raise window and check the clearance of the glass fore and aft in the top of the rear channel. The recommended clearance is .030" which should be maintained for the whole length of the channel. Excess clearance will allow tilting and the jamming of the glass and insufficient clearance will produce stiff operation. Clearance can be obtained by the use of packing washers between the inner door panel and top channel bracket (see illustration A-A).
3. Adjust bottom brackets and crimp the tie rod to ensure that the channels are parallel (illustration C).
4. Remove regulator pivot pin nut and delete spring washer under head of nut. Add washer WP0119 1/2"x 7/8" x .050" behind head of pivot bolt and additional washer WP0160 5/16" x 1 5/8" x 16 S.W.G. behind head of nut (illustration B-B).
5. Tighten nut sufficiently to allow ease of operation and peen or center pop end of thread.
6. Refit trim.



5/97



B-B



A-A