

SERVICE INFORMATION



STANDARD AND TRIUMPH VEHICLES

(NOT FOR PUBLICATION)

No.	SPORTS/2/B	EXCESSIVE LOSS OF OIL FROM THE CRANCASE BREATHER PIPE	Date	APRIL 1954
------------	------------	--	-------------	------------

It has been found that under sustained top speed condition that the oil splash in certain engines allows considerable loss of oil through the crankcase breather pipe, Part No. 201650.

The crankcase was modified at Commission No. TS.972E. to incorporate in the casting a baffle to shield the breather pipe aperture. A new breather pipe, Part No. 202126., must be used with the modified crankcase.

To deal with complaints of excessive loss of oil at this point, with cars prior to the Commission Number quoted, the end shield shown in the illustration can be quite easily fabricated and fitted.

NOTE: These instructions are for information only and do not constitute an authority to carry out modifications at the expense of The Standard Motor Company Limited.

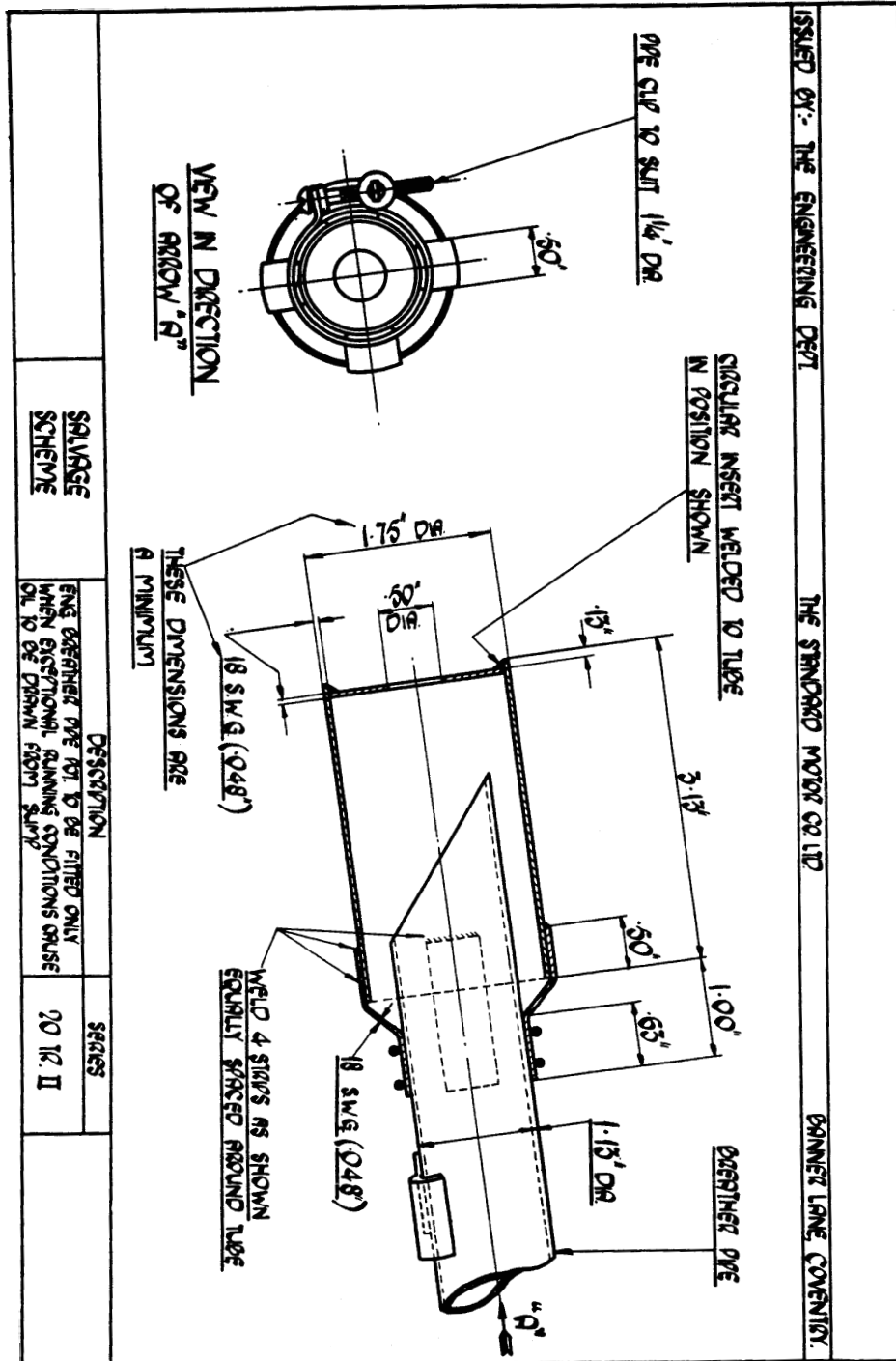
1 ILLUSTRATION.

SERVICE INFORMATION



STANDARD AND TRIUMPH VEHICLES

(NOT FOR PUBLICATION)



SALVAGE
SCHEME

DESCRIPTION

ENG EXHAUST PIPE NOT TO BE FITTED ONLY WHEN EXCEPTIONAL RUNNING CONDITIONS OBLIGE OIL TO BE DRAWN FROM SUPT

SERIES

20 TR II

This Sheet gives Important service Information and should be filed by your Service Dept. in the Service Information Folder.