

SERVICE INFORMATION



STANDARD AND TRIUMPH VEHICLES

(NOT FOR PUBLICATION)

| | | | | |
|------------|------------|-------------------|-------------|---------------|
| No. | SPORTS/3/N | BATTERY BOX DRAIN | Date | DECEMBER 1954 |
|------------|------------|-------------------|-------------|---------------|

Isolated cases of water entering the Battery container box have been reported, where cars are used in thunderstorms, or under similar conditions of rainfall experienced in some tropical areas. The water finds its way, under such conditions, into the battery box owing to “build up” at the rear of the bonnet.

A battery box drain tube has now been incorporated in normal manufacture and was introduced at Commission No. TS. 3288. Retrospective action can be taken with earlier cars, if desired, as shown in the illustration.

NOTE: These instructions are for information only and do not constitute an authority to carry out modifications at the expense of The Standard Motor Company Limited.

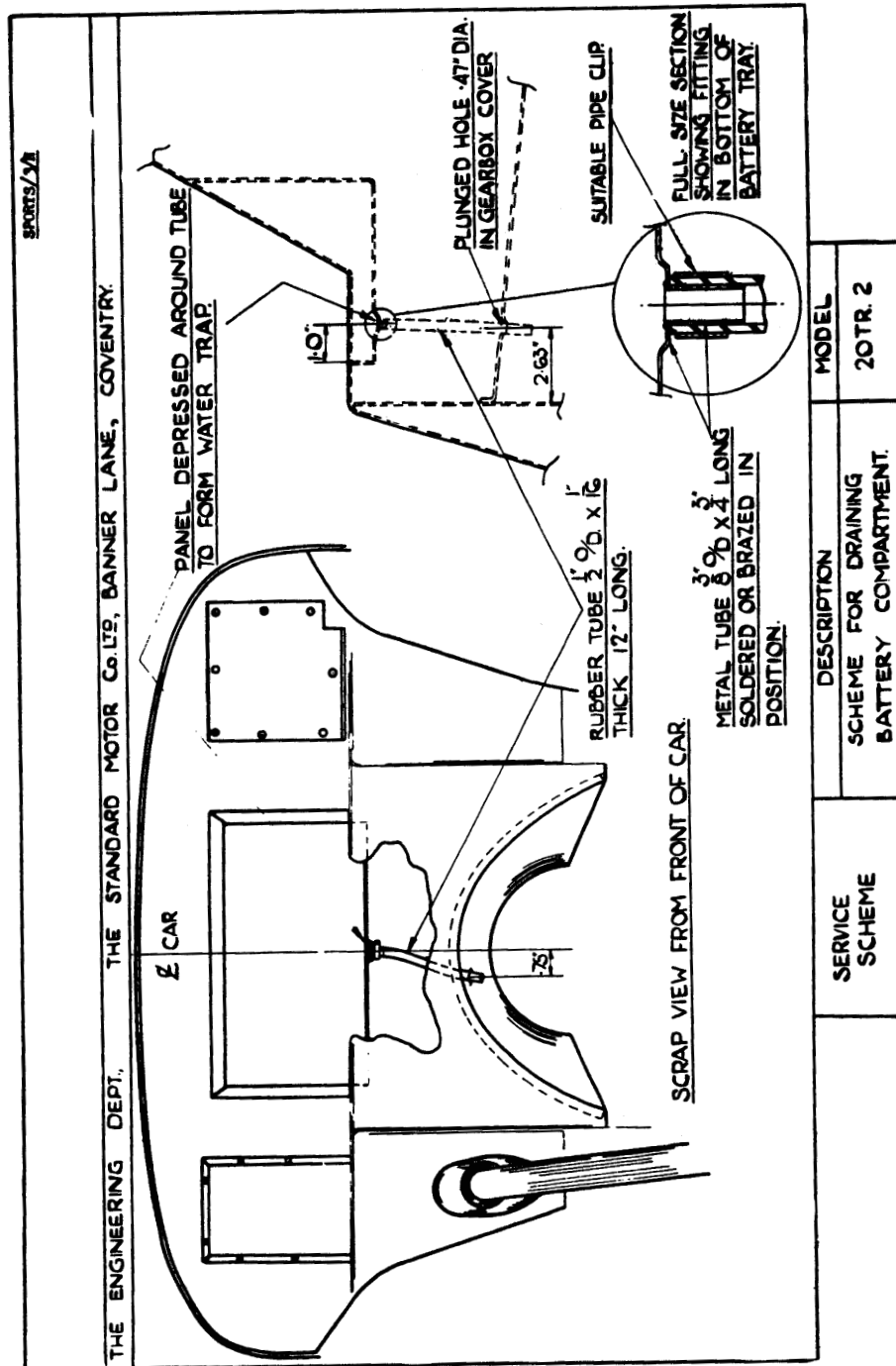
1 ILLUSTRATION.

SERVICE INFORMATION



STANDARD AND TRIUMPH VEHICLES

(NOT FOR PUBLICATION)



This Sheet gives Important service Information and should be filed by your Service Dept. in the Service Information Folder.